

REGISTERED
PROFESSIONAL
LAND SURVEYOR

Paul A. Kohn

OREGON
MAY 21, 2013
PAUL ALLEN KOHN
58964PLS

RENEWS: 6/30/19

RECORD OF SURVEY

LOCATED IN THE SOUTHWEST ONE QUARTER OF SECTION 26,
AND THE SOUTHEAST ONE QUARTER OF SECTION 27,
TOWNSHIP 2 SOUTH, RANGE 1 WEST, WILLAMETTE MERIDIAN,
CITY OF TUALATIN, WASHINGTON COUNTY, OREGON.

FOR: CITY OF TUALATIN

WASHINGTON COUNTY
SURVEYOR'S OFFICE

ACCEPTED FOR FILING: 4-25-2019

33565
1/4

GARDEN CORNER

WALLIS ENGINEERING INC.
215 W 4TH ST. #200
VANCOUVER, WA
98660

CES | NW

13190 SW 68th Parkway, Suite 150
Tigard, Oregon 97223
503.968.6655 www.cesnw.com

REVISIONS

DATE: 02/27/19
DRAWN BY: JGH

PROJECT NO.: 3469
DESIGNED BY: PAK

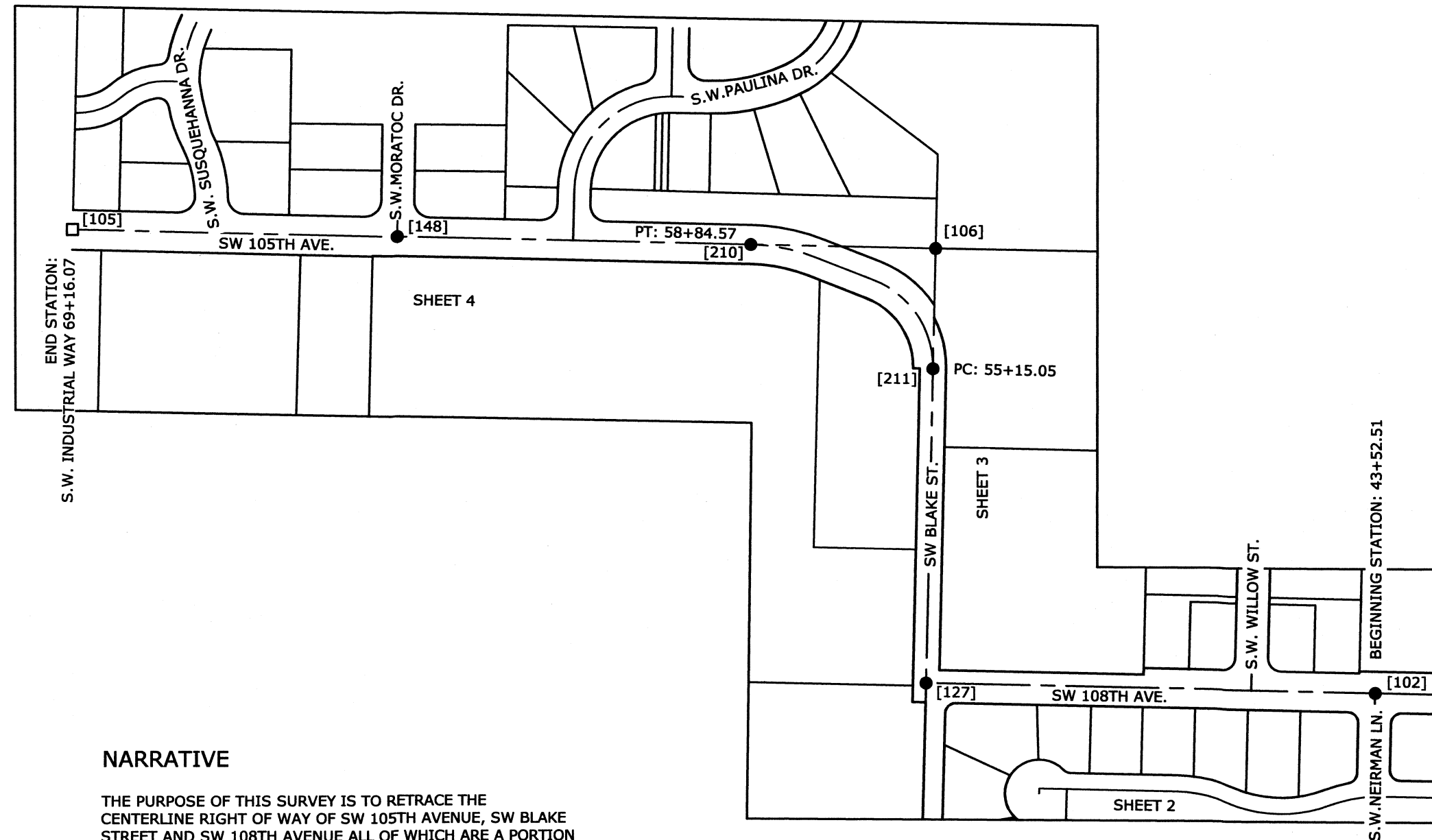
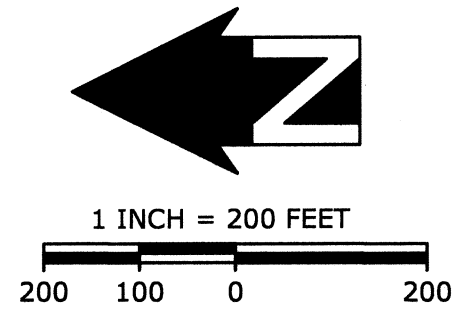
RECORD OF
SURVEY

SHEET

1

OF

4



REFERENCES

- U.S.B.T. 2002-055
- "COMANCHE WOODS NO.2"
- S.N. 10769
- "INDIAN WOODS"
- C.R. 1395
- S.N. 17834
- S.N. 22304
- "COMTE AND KOHLMAN'S LITTLE HOMES NO.3"
- "HEDGES PARK"
- S.N. 30582
- "IBACH PARK ESTATES"
- S.N. 31190

(ALL REFERENCED DOCUMENTS ARE RECORDS OF WASHINGTON COUNTY)

LEGEND

- = MONUMENT FOUND AS NOTED
- = MONUMENT IN BOX FOUND AS NOTED
- △ = CONTROL POINT AS NOTED
- IP = IRON PIPE
- IR = IRON ROD
- W/YPC = WITH YELLOW PLASTIC CAP
- W/RPC = WITH RED PLASTIC CAP
- W/OPC = WITH ORANGE PLASTIC CAP
- AC = WITH ALUMINUM CAP
- NR = RECORD OF ORIGIN NOT LOCATED
- MON = MONUMENT
- SN = WASHINGTON COUNTY SURVEY NUMBER
- U.S.B.T. = UNITED STATES BEARING TREE RECORD
- P.U.E. = PUBLIC UTILITY EASEMENT
- P.S.D.E. = PUBLIC STORM DRAIN EASEMENT
- CR = WASHINGTON COUNTY ROAD NUMBER
- = EASEMENTS

NARRATIVE

THE PURPOSE OF THIS SURVEY IS TO RETRACE THE CENTERLINE RIGHT OF WAY OF SW 105TH AVENUE, SW BLAKE STREET AND SW 108TH AVENUE ALL OF WHICH ARE A PORTION OF (COUNTY ROAD 1395) BETWEEN SW NEIRMAN LANE AT STATION 43+52.51 TO SW INDUSTRIAL WAY AT STATION 69+16.07, COUNTY ROAD NUMBER 1395, WASHINGTON COUNTY ROAD RECORDS AND TO LOCATE AND PERPETUATE THE EXISTING MONUMENTS ALONG (COUNTY ROAD 1395) PURSUANT TO O.R.S. 209.155(b).

THE BASIS OF BEARINGS FOR THIS SURVEY IS THE OREGON COORDINATE SYSTEM OF 1983, NORTH ZONE. (NAD 83(2011) EPOCH 2010.00.

CONTROL NETWORK

OREGON REAL-TIME GPS (ORGN) OBSERVATIONS WERE MADE ON PRIMARY CONTROL STATION NUMBER 10 AND NUMBER 11. DIFFERENTIAL REAL TIME KINAMATIC (RTK) GPS OBSERVATIONS WERE MADE BETWEEN PRIMARY CONTROL STATIONS 10, 11, 12, AND 13. TERRESTRIAL GROUND OBSERVATIONS WERE MADE BETWEEN ALL INTERVISIBLE CONTROL STATIONS. THE (ORGN) OBSERVATIONS ALONG WITH THE RTK OBSERVATION AND THE CONVENTIONAL GROUND MEASUREMENTS WERE ADJUSTED USING TRIMBLE BUSINESS CENTER (TBC) SOFTWARE VERSION 4.00.

THE HORIZONTAL DATUM IS NAD 83 (2011) EPOCH 2010.00 OREGON NORTH 3601, INTERNATIONAL FEET. THE COORDINATES SHOWN ARE GROUND COORDINATES AND ARE ON A "LOCAL DATUM PLANE" (LDP).

THE VERTICAL DATUM IS NAVD 88. A GPS DERIVED ELEVATION OF = 266.10 WAS OBSERVED ON CONTROL POINT NUMBER 11 UTILIZING THE OREGON REAL TIME NETWORK (ORGN) CONTROL POINT NUMBER 11 IS DESCRIBED AS FOLLOWS: A 5/8" X 30" IRON ROD WITH RED PLASTIC CAP INSCRIBED "CES NW CONTROL" AT THE NW QUADRANT OF SW NEIRMAN LANE AND SW 108TH AVENUE.

POINT DATA, STATIONS AND OFFSETS FOR ALL OF THE LISTED CONTROL POINTS AND MONUMENTS ON THIS SURVEY ARE SHOWN ALONG THE ALIGNMENT OF COUNTY ROAD NUMBER 1395.

COUNTY ROAD NUMBER (1395)

THE CENTERLINE OF THAT SAID PORTION OF COUNTY ROAD (1395) WAS ESTABLISHED BY HOLDING STATION 50+35.80 AT MONUMENT [127] AND A LINE SOUTH TO MONUMENT NUMBER [102] FOR A PORTION OF THE CENTERLINE OF SW 108TH AVENUE.

THE CENTERLINE OF SW BLAKE STREET, COUNTY ROAD NUMBER (1395) IS A LINE HELD FROM MONUMENT NUMBER [127] THROUGH MONUMENT NUMBER [211] TO MONUMENT NUMBER [106].

THE TWO CURVES AND SMALL TANGENT BEGINNING AT STATION 55+15.05 WERE ESTABLISHED BY HOLDING TANGENT CURVES FROM SW BLAKE STREET AND SW 105TH AVENUE AND BY HOLDING THE RECORD RADIUS FOR BOTH CURVES, WHICH FIT WELL WITH THE RECORD CURVE LENGTHS AND THE LENGTH OF THE TANGENT BETWEEN THE TWO CURVES.

THE PORTION OF THE CENTERLINE OF SW 105TH AVENUE, COUNTY ROAD NUMBER (1395) IS A LINE HELD FROM MONUMENT NUMBER [106] TO MONUMENT NUMBER [105].

REGISTERED
PROFESSIONAL
LAND SURVEYOR

Paul A. Kohn

OREGON
MAY 21, 2013
PAUL ALLEN KOHN
58964PLS

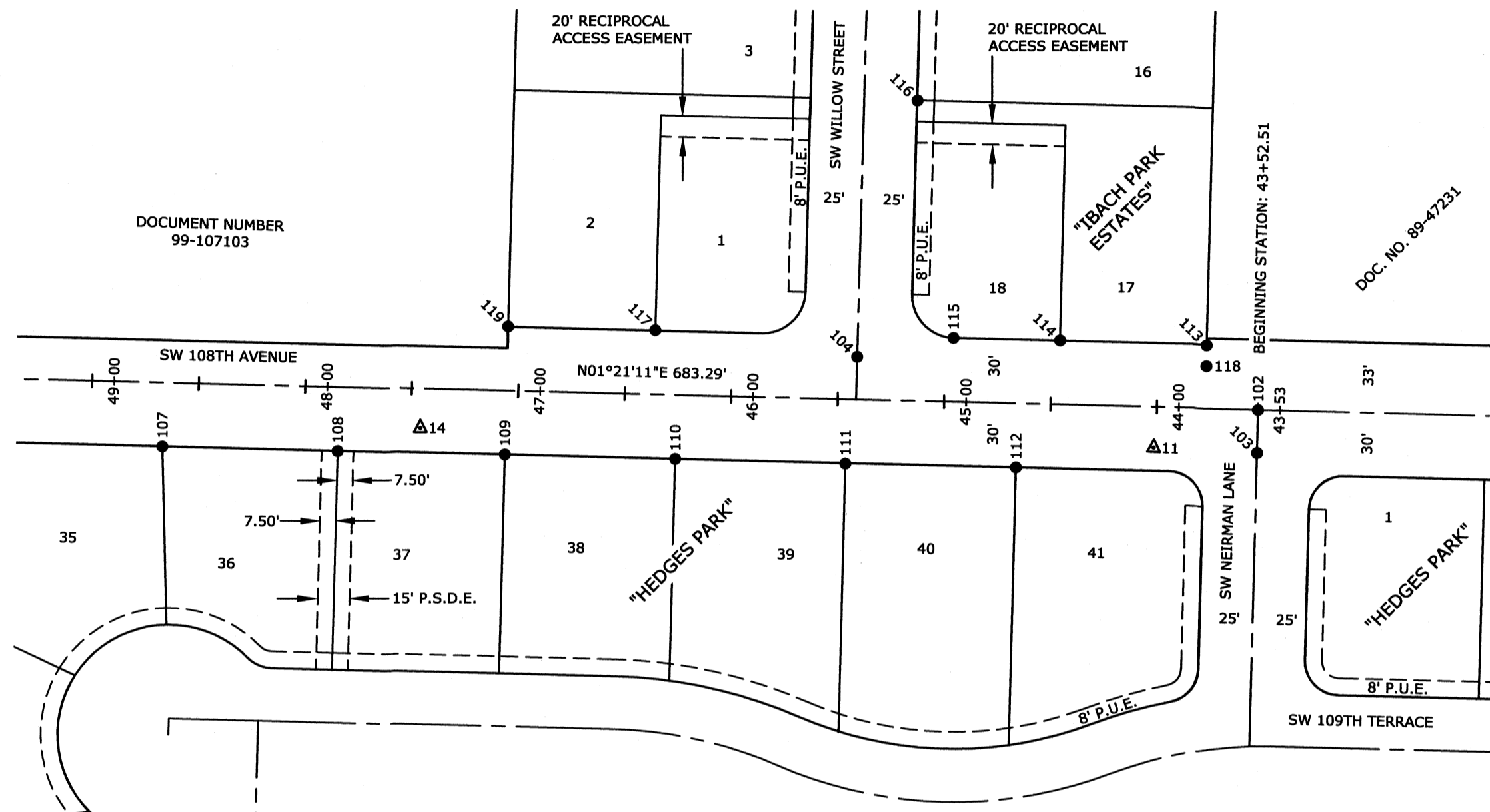
RENEWS: 6/30/19

RECORD OF SURVEY

LOCATED IN THE SOUTHWEST ONE QUARTER OF SECTION 26,
AND THE SOUTHEAST ONE QUARTER OF SECTION 27,
TOWNSHIP 2 SOUTH, RANGE 1 WEST, WILLAMETTE MERIDIAN,
CITY OF TUALATIN, WASHINGTON COUNTY, OREGON.

FOR: CITY OF TUALATIN

33565
2/4



SURVEY CONTROL POINT DATA

PT. #	STATION	OFFSET	NORTHING	EASTING	ELEVATION	DESCRIPTION
14	47+45.54	-18.55'	626983.469	7614203.393	255.05'	1 1/4" COPPER DISC STAMPED "CESNW INC."
11	44+01.06	-19.16'	626639.107	7614194.652	266.10'	5/8" IR W/RPC STAMPED "CESNW CONTROL"

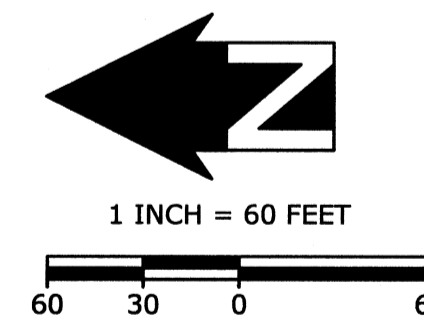
RECORD MONUMENT DATA

WALKER ROAD ALIGNMENT:

PT. #	STATION	OFFSET	NORTHING	EASTING	DESCRIPTION	REFERENCE
107	48+66.41	-29.97'	627104.576	7614194.827	5/8" IR W/OPC STAMPED "CONSULTING ENGINEERING SERVICES", DOWN 0.2'	"HEDGES PARK"
108	47+84.14	-30.02'	627022.330	7614192.835	5/8" IR W/OPC STAMPED "CONSULTING ENGINEERING SERVICES", DOWN 0.5'	"HEDGES PARK"
109	47+05.55	-29.97'	626943.766	7614191.028	5/8" IR W/OPC STAMPED "CONSULTING ENGINEERING SERVICES", DOWN 0.5'	"HEDGES PARK"
119	47+05.50	30.18'	626942.296	7614251.161	5/8" IR W/OPC STAMPED "CONSULTING ENGINEERING SERVICES", DOWN 1.0'	"IBACH PARK ESTATES"
110	46+25.52	-30.02'	6266863.762	7614189.096	5/8" IR W/OPC STAMPED "CONSULTING ENGINEERING SERVICES", DOWN 0.1'	"HEDGES PARK"
117	46+36.29	30.19'	626873.107	7614249.54	5/8" IR W/OPC STAMPED "CONSULTING ENGINEERING SERVICES", DOWN 0.1'	"IBACH PARK ESTATES"
104	45+41.32	20.08'	626778.400	7614237.184	2" AC ILLEGIBLE, FLUSH	"IBACH PARK ESTATES"
111	45+45.65	-30.25'	626783.915	7614186.972	5/8" IR W/OPC STAMPED "CONSULTING ENGINEERING SERVICES", DOWN 0.1'	"HEDGES PARK"
116	45+16.17	142.08'	626750.379	7614358.564	5/8" IR, UP 0.1'	"IBACH PARK ESTATES"
115	44+96.34	30.03'	626733.193	7614246.07	5/8" IR W/OPC STAMPED "CONSULTING ENGINEERING SERVICES", DOWN 0.2'	"IBACH PARK ESTATES"
112	44+65.61	-30.06'	626703.897	7614185.271	5/8" IR, DOWN 0.2'	"HEDGES PARK"
114	44+46.27	30.09'	626683.141	7614244.95	5/8" IR W/OPC STAMPED "CONSULTING ENGINEERING SERVICES", DOWN 0.1'	"IBACH PARK ESTATES"
118	43+77.28	20.02'	626614.408	7614233.259	5/8" IR W/OPC STAMPED "CONSULTING ENGINEERING SERVICES", DOWN 0.4'	NR
113	43+77.44	29.76'	626614.332	7614243.000	5/8" IR, BENT, TIED SPIN HOLE, DOWN 0.6'	"IBACH PARK ESTATES"
102	43+52.51	0.00'	626590.115	7614212.656	2" AC STAMPED "CONSULTING ENGINEERING SERVICES", FLUSH	S.N. 31190
103	43+52.52	-20.13'	626590.599	7614192.535	2" AC ILLEGIBLE, FLUSH	"HEDGES PARK"

LEGEND

- = MONUMENT FOUND AS NOTED
- = MONUMENT IN BOX FOUND AS NOTED
- △ = CONTROL POINT AS NOTED
- IP = IRON PIPE
- IR = IRON ROD
- W/YPC = WITH YELLOW PLASTIC CAP
- W/RPC = WITH RED PLASTIC CAP
- W/OPC = WITH ORANGE PLASTIC CAP
- AC = WITH ALUMINUM CAP
- NR = RECORD OF ORIGIN NOT LOCATED
- MON = MONUMENT
- SN = WASHINGTON COUNTY SURVEY NUMBER
- U.S.B.T. = UNITED STATES BEARING TREE RECORD
- P.U.E. = PUBLIC UTILITY EASEMENT
- P.S.D.E. = PUBLIC STORM DRAIN EASEMENT
- CR = WASHINGTON COUNTY ROAD NUMBER
- = EASEMENTS



GARDEN CORNER

WALLIS ENGINEERING INC.
215 W 4TH ST. #200
VANCOUVER, WA
98660

CESNW

13190 SW 68th Parkway, Suite 150
Tigard, Oregon 97223
503.968.6655 www.cesnw.com

REVISIONS

PROJECT NO.: 3469
DATE: 02/27/19
DESIGNED BY: PAK
DRAWN BY: JGH

RECORD OF
SURVEY

SHEET

2

OF

4

3469.R05.DWG

REGISTERED
PROFESSIONAL
LAND SURVEYOR

Paul Allen Kohn

OREGON
MAY 21, 2013
PAUL ALLEN KOHN
58964PLS

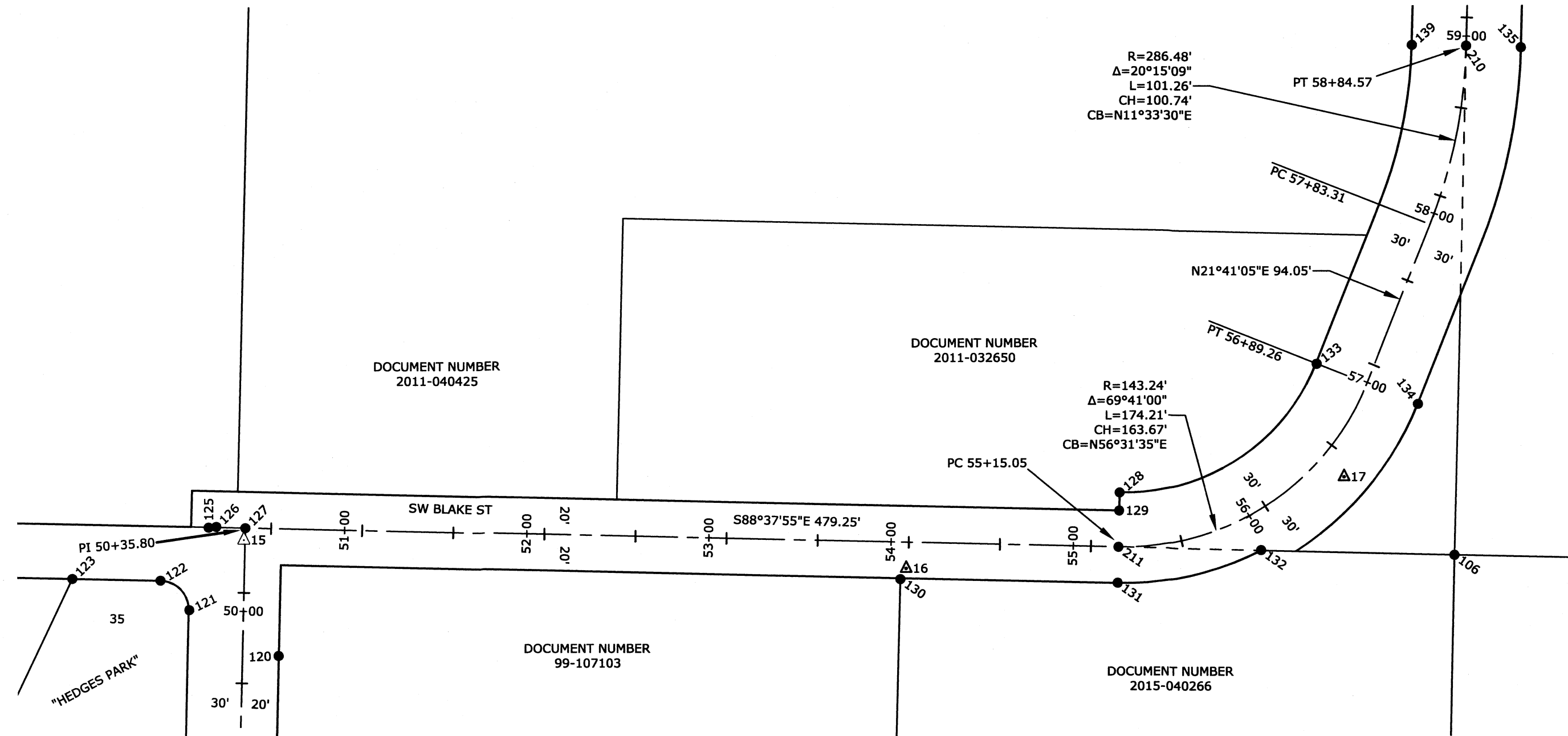
RENEWS: 6/30/19

RECORD OF SURVEY

LOCATED IN THE SOUTHWEST ONE QUARTER OF SECTION 26,
AND THE SOUTHEAST ONE QUARTER OF SECTION 27,
TOWNSHIP 2 SOUTH, RANGE 1 WEST, WILLAMETTE MERIDIAN,
CITY OF TUALATIN, WASHINGTON COUNTY, OREGON.

33565
3/4

FOR: CITY OF TUALATIN



SURVEY CONTROL POINT DATA

PT. #	STATION	OFFSET	NORTHING	EASTING	ELEVATION	DESCRIPTION
17	56+41.18	16.18'	627300.555	7614831.795	225.58'	5/8" IR W/RPC STAMPED "CESNW CONTROL"
16	53+98.88	14.48'	627250.061	7614591.427	241.22'	5/8" IR W/RPC STAMPED "CESNW CONTROL"
15	50+29.13	-0.60'	627266.563	7614228.030	247.44'	5/8" IR W/RPC STAMPED "CESNW CONTROL"

RECORD MONUMENT DATA

WALKER ROAD ALIGNMENT:

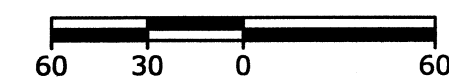
PT. #	STATION	OFFSET	NORTHING	EASTING	DESCRIPTION	REFERENCE
210	58+84.57	-0.09'	627538.129	7614899.283	5/8" IR, BENT, TIED SPIN HOLE, DOWN 0.5'	C.R. 1395
135	58+84.37	29.98'	627537.148	7614929.331	3/4" IP, DOWN 2.4'	C.R. 1395
139	58+84.28	-29.90'	627538.609	7614869.475	3/4" IP	C.R. 1395
133	56+89.15	-29.58'	627362.891	7614816.911	3/4" IP, DOWN 1.0'	C.R. 1395
134	56+89.15	30.18'	627340.749	7614872.426	3/4" IP, DOWN 0.3'	C.R. 1395
106	56+45.49	90.33'	627257.362	7614892.350	2" IP, DOWN 2.0'	S.N. 17834
132	55+86.87	19.83'	627260.139	7614786.276	5/8" IR W/RPC STAMPED "W.L.M.C. L.S.808", DOWN 0.8'	S.N. 22304
211	55+15.05	0.00'	627261.803	7614707.912	1/2" IP, DOWN 0.4'	S.N. 17834
131	55+15.11	19.84'	627241.936	7614707.498	3/4" IP, DOWN 0.1'	C.R. 1395
129	55+15.06	-20.00'	627281.762	7614708.393	3/4" IP W/PC STAMPED "WASH. C.S.", DOWN 1.1'	S.N. 17834
128	55+15.06	-30.01'	627291.767	7614708.637	3/4" IP W/PC STAMPED "WASH. C.S.", DOWN 1.3'	S.N. 17834
130	53+95.85	20.43'	627244.192	7614588.253	3/4" IP, UP 1.0'	NR
127	50+35.80	0.00'	627273.210	7614228.791	5/8" IR, DOWN 1.3'	"COMTE AND KOHLMAN'S LITTLE HOMES NO.3"
126			627273.915	7614212.885	1/2" IP, DOWN 0.2'	S.N. 10769
125	50+35.60	-20.09'	627273.492	7614208.702	1/2" IP, DOWN 0.2'	S.N. 10769
122	50+05.87	-45.90'	627244.376	7614182.192	5/8" IR W/OPC STAMPED "CONSULTING ENGINEERING SERVICES", UP 0.3'	"HEDGES PARK"
123	50+05.85	-94.32'	627245.505	7614133.788	5/8" IR W/OPC STAMPED "CONSULTING ENGINEERING SERVICES", DOWN 0.1'	"HEDGES PARK"
121	49+89.88	-29.69'	627228.009	7614198.029	5/8" IR W/OPC STAMPED "CONSULTING ENGINEERING SERVICES", DOWN 0.3'	"HEDGES PARK"
120	49+65.62	19.93'	627202.581	7614247.062	5/8" IR, DOWN 1.0'	S.N. 30582

LEGEND

- = MONUMENT FOUND AS NOTED
- = MONUMENT IN BOX FOUND AS NOTED
- △ = CONTROL POINT AS NOTED
- IP = IRON PIPE
- IR = IRON ROD
- W/YPC = WITH YELLOW PLASTIC CAP
- W/RPC = WITH RED PLASTIC CAP
- W/OPC = WITH ORANGE PLASTIC CAP
- AC = WITH ALUMINUM CAP
- NR = RECORD OF ORIGIN NOT LOCATED
- MON = MONUMENT
- SN = WASHINGTON COUNTY SURVEY NUMBER
- U.S.B.T. = UNITED STATES BEARING TREE RECORD
- P.U.E. = PUBLIC UTILITY EASEMENT
- P.S.D.E. = PUBLIC STORM DRAIN EASEMENT
- CR = WASHINGTON COUNTY ROAD NUMBER
- = EASEMENTS



1 INCH = 60 FEET



GARDEN CORNER

WALLIS ENGINEERING INC.
215 W 4TH ST. #200
VANCOUVER, WA
98660

CESNW

13190 SW 68th Parkway, Suite 150
Tigard, Oregon 97223
503.968.6655 www.cesnw.com

REVISIONS

PROJECT NO.: 3469
DATE: 02/27/19
DESIGNED BY: PAK
DRAWN BY: JGH

RECORD OF
SURVEY

SHEET

3

OF

4

3469.RCS.DWG

REGISTERED
PROFESSIONAL
LAND SURVEYOR

Paul Allen Kohn

OREGON
MAY 21, 2013
PAUL ALLEN KOHN
58964PLS

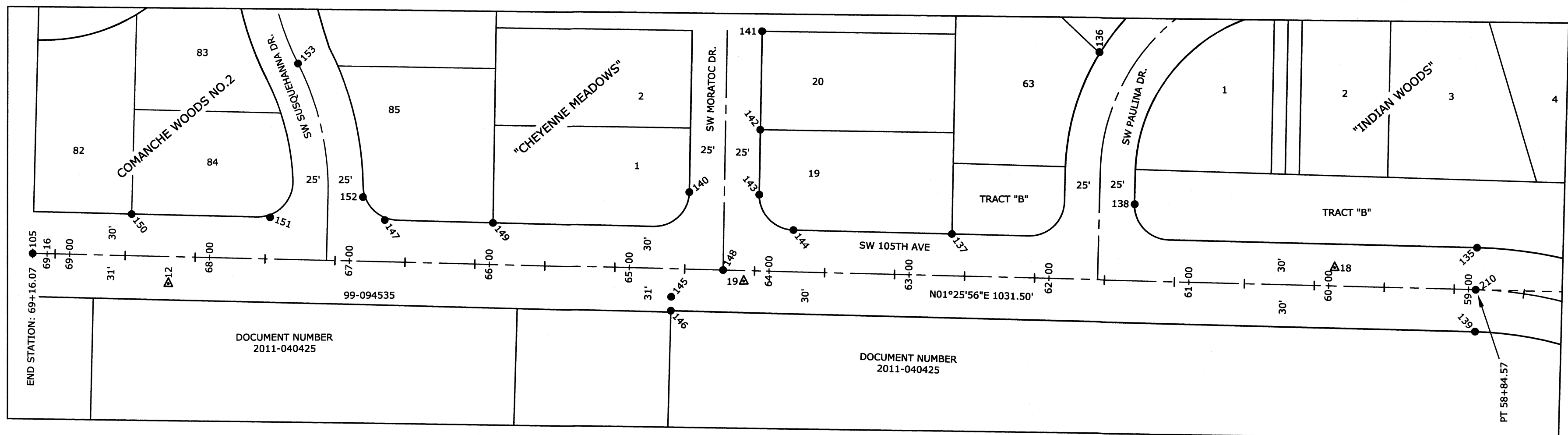
RENEWS: 6/30/19

RECORD OF SURVEY

LOCATED IN THE SOUTHWEST ONE QUARTER OF SECTION 26,
AND THE SOUTHEAST ONE QUARTER OF SECTION 27,
TOWNSHIP 2 SOUTH, RANGE 1 WEST, WILLAMETTE MERIDIAN,
CITY OF TUALATIN, WASHINGTON COUNTY, OREGON.

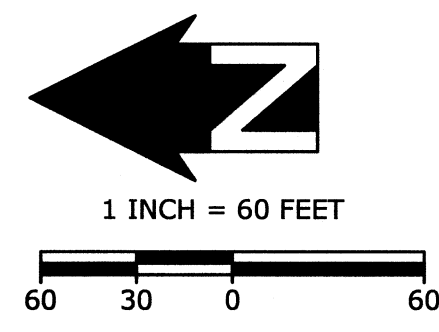
33565
4/4

FOR: CITY OF TUALATIN



SURVEY CONTROL POINT DATA

PT. #	STATION	OFFSET	NORTHING	EASTING	ELEVATION	DESCRIPTION
12	68+18.65	-19.31'	628472.397	7614903.411	221.65'	5/8" IR W/RPC STAMPED "CESNW CONTROL"
18	59+85.71	13.14'	627638.902	7614915.036	200.77'	5/8" IR W/RPC STAMPED "CESNW CONTROL"
19	64+07.58	-7.54'	628061.159	7614904.907	224.62'	3" MAG SPIKE EMBOSSED "MAG SPIKE"



RECORD MONUMENT DATA

COUNTY ROAD #1395 ALIGNMENT:

PT. #	STATION	OFFSET	NORTHING	EASTING	DESCRIPTION	REFERENCE
105	69+16.07	0.00'	628569.300	7614925.149	2" BRASS DISC STAMPED "1978 2S1 27 - 26 WASH. CO. SURVEYOR, IN BOX	U.S.B.T. 2002-055
150	68+46.13	29.92'	628498.639	7614953.315	5/8" IR W/YPC ILLEGIBLE, DOWN 0.5'	"COMANCHE WOODS NO.2"
151	67+47.12	29.93'	628399.656	7614950.850	5/8" IR W/YPC ILLEGIBLE, DOWN 0.3'	"COMANCHE WOODS NO.2"
153	67+30.01	140.88'	628379.782	7615061.330	PK NAIL, FLUSH	NR
152	66+81.14	46.02'	628333.290	7614965.285	5/8" IR, DOWN 0.3'	"COMANCHE WOODS NO.2"
147	66+65.13	29.94'	628317.695	7614948.813	5/8" IR, UP 0.3'	"COMANCHE WOODS NO.2"
149	65+87.85	29.95'	628240.439	7614946.882	1 1/2" AC ILLEGIBLE, UP 0.1'	"COMANCHE WOODS NO.2"
145	64+59.17	-20.03'	628113.045	7614893.708	1" IP, DOWN 0.5'	S.N. 10769
146	64+59.18	-29.98'	628113.298	7614883.757	1" IP, DOWN 0.3'	NR
140	64+48.06	55.25'	628100.053	7614968.687	5/8" IR, DOWN 0.3'	"CHEYENNE MEADOWS"
148	64+22.60	0.06'	628075.985	7614912.876	5/8" IR, DOWN 0.3'	"CHEYENNE MEADOWS"
143	63+98.07	54.79'	628050.093	7614966.972	5/8" IR, DOWN 0.4'	"CHEYENNE MEADOWS"
142	63+98.55	101.54'	628049.407	7615013.719	5/8" IR, DOWN 0.1'	"CHEYENNE MEADOWS"
141	63+99.04	172.24'	628048.124	7615084.409	5/8" IR, BENT, TIED SPIN HOLE, DOWN 0.5'	"CHEYENNE MEADOWS"
144	63+73.06	30.01'	628025.712	7614941.578	5/8" IR W/YPC STAMPED "CASWELL 737", DOWN 1.1'	"CHEYENNE MEADOWS"
137	62+59.73	29.98'	627912.414	7614938.718	2" IRON PIPE W/YPC STAMPED "CASWELL 737", DOWN 0.8'	"CHEYENNE MEADOWS"
136	61+57.75	163.41'	627807.129	7615069.559	5/8" IR, DOWN 0.1'	"INDIAN WOODS"
138	61+29.65	54.92'	627781.749	7614960.400	5/8" IR, DOWN 0.4'	"INDIAN WOODS"
210	58+84.57	-0.09'	627538.129	7614899.283	5/8" IR, BENT, TIED SPIN HOLE, DOWN 0.5'	C.R. 1395
135	58+84.37	29.98'	627537.148	7614929.331	3/4" IP, DOWN 2.4'	C.R. 1395
139	58+84.28	-29.90'	627538.609	7614869.475	3/4" IP	C.R. 1395

LEGEND

- = MONUMENT FOUND AS NOTED
- = MONUMENT IN BOX FOUND AS NOTED
- △ = CONTROL POINT AS NOTED
- IP = IRON PIPE
- IR = IRON ROD
- W/YPC = WITH YELLOW PLASTIC CAP
- W/RPC = WITH RED PLASTIC CAP
- W/OPC = WITH ORANGE PLASTIC CAP
- AC = WITH ALUMINUM CAP
- NR = RECORD OF ORIGIN NOT LOCATED
- MON = MONUMENT
- SN = WASHINGTON COUNTY SURVEY NUMBER
- U.S.B.T. = UNITED STATES BEARING TREE RECORD
- P.U.E. = PUBLIC UTILITY EASEMENT
- P.S.D.E. = PUBLIC STORM DRAIN EASEMENT
- CR = WASHINGTON COUNTY ROAD NUMBER
- = EASEMENTS

GARDEN CORNER

WALLIS ENGINEERING INC.
215 W 4TH ST. #200
VANCOUVER, WA
98660

CESNW

13190 SW 68th Parkway, Suite 150
Tigard, Oregon 97223
503.968.6635 www.cesnw.com

REVISIONS

PROJECT NO.: 3469
DATE: 02/27/19
DESIGNED BY: JGH
PAK

RECORD OF SURVEY

SHEET

4

OF

4

3469.R05.DWG